

E-FIT

REDEFINING PIPE
INSTALLATIONS WITH
EFFORTLESS RELIABILITY,
ALL WITH A SINGLE TOOL



**SINGLE
TOOL**
INSTALLATION

MAKE YOUR LIFE EASY
WITH OUR KNOWLEDGE AT YOUR SERVICE!



EASY ASSEMBLY

lightweight tool,
ratcheting gripper



MINIMAL EXPENSES

Requires just a cost
effective electric
screwdriver



CLEAR INDICATOR

Detachable
indicator for
correct assembly.



SUPER RELIABLE

A novel connection
method harnessing
electrical power and
metal threads.



MINIMAL INSTALLATION SPACE

Lateral access.

E-FIT

REVOLUTIONIZING MULTILAYER PIPE INSTALLATIONS

EFFORTLESS INSTALLATION WITH ADVANCED PRODUCT TECHNOLOGY

Experience the future of pipe fittings with E-FIT, a state-of-the-art multilayer fitting engineered for simplicity and efficiency. Designed for seamless and simple integration with an electric screwdriver, E-FIT elevates the installation process by leveraging cutting-edge technology.

SPECIFICATIONS

Diameter: 16-32

Pipe Type: Multilayer HELIROMA (Heliklima)

KEY FEATURES

Innovative Design/Cost Saving: E-FIT requires only an electric screwdriver, revolutionizing traditional installation methods.

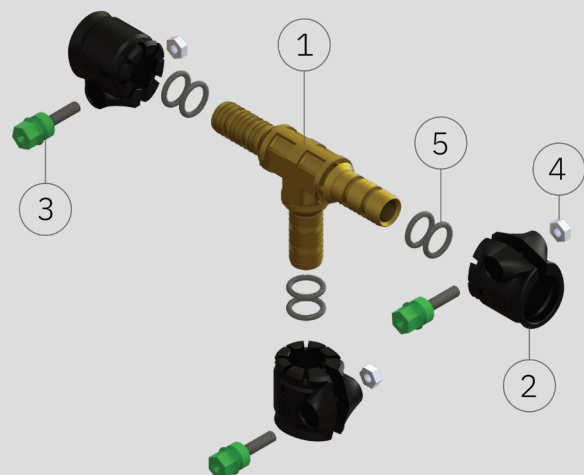
User-Friendly: Intuitive and straightforward, the installation process is powered by an electric tool that is both lightweight and cost-effective, as well as the perfect installation is assured by visual indicators showing that installation is finished and complete.

Optimal Accessibility: The hex bolt features easy lateral access, ensuring a hassle-free installation experience.

Quality Assurance: Guarantee the highest standards of quality and performance.

Embrace the **ease and precision** of E-FIT, where **advanced technology** meets **practical application**. Transform your projects with our **cutting-edge solutions**, designed for **excellence, reliability** and **cost saving**.

FITTING PARTS



- ① Brass body
- ② Polymer gripper
- ③ Metal screw & detachable indicator
- ④ Nut
- ⑤ Seals

